

**ORGANISATION EUROPÉENNE POUR LA RECHERCHE NUCLÉAIRE
EUROPEAN ORGANIZATION FOR NUCLEAR RESEARCH**

Laboratoire Européen pour la Physique des Particules
European Laboratory for Particle Physics

CERN

Personnel Statistics

2013

Human Resources Department
April 2014

Contents

Table		Page
1.	Total number of members of the personnel by department and status	6
1a.	Associated members of the personnel by department and cern class	7
2.	Evolution in the number of staff members, fellows and MPAs over the last 5 years	8
3.	Number of fellows by category	8
4.	Total number of female members of the personnel by department and status	9
5a.	Staff Members by professional category and working hours	10
5b.	Staff Members by professional category, gender and programmes for flexibility in working conditions	10
6.	Staff, fellows and MPAs (excluding Users) by professional category	11
7a.	Staff members, fellows and MPAs (excluding Users) by gender and professional category	12
7b.	Users by gender and professional category	13
8.	Staff members by professional category over the past 10 years	14
9a.	Users by nationality and professional category	15
9b.	Non-member state users by nationality and professional category	16
10.	Users by nationality and experiment	18
11.	Users by professional category and yearly presence in % at CERN	19
12.	Staff members by type of contract and years of service	20
13a.	Staff members by professional category and type of contract	21
13b.	Staff members by gender and type of contract	21
14.	Evolution in the number of staff members by professional category and type of contract	22
15.	Evolution in the number of children, infants and personnel receiving family allowance	23
16.	Staff Members by nationality and type of residence	24
17.	Other members of the personnel by nationality and status	25
18.	Staff members by nationality and professional category	26
19.	Staff members by nationality, career path and gender	27
20.	Staff members by nationality, gender and professional category	28
21.	Evolution in the number of staff members by age range over the last 10 years	29
22.	Staff members by age range and professional category	30
23.	Fellows and MPAs by age range	31
24.	Evolution of Arrivals of staff members by age group over the past 10 years	32
25.	Average age by professional category, status and type of contract	33
26.	Staff members by professional category and years of service	33
Staff Recruitment		
27.	Candidates applied, invited/appeared for selection boards and appointments offered/refused by nationality and gender	34
28.	Vacancies published and filled	34
29.	Candidates Applied and Selected by Professional Category	35
30.	Number of candidates selected by nationality over the past 5 years	36
31.	Staff members recruited (arrivals) by professional category	37
Fellows Recruitment		
32a./b.	Recruitment of fellows by gender and nationality	38
33.	Number of fellows selected by nationality over the past 5 years	39
Student Recruitment		
34.	Candidates applied and selected for the technical and doctoral student programme	40
35.	Number of technical and doctoral students selected over the past 5 years	40
36.	Candidates applied and selected for the summer student programme	41
37.	Candidates applied and selected for the administrative student programme	41
38.	Staff member arrivals and departures by residential category and nationality	42
39.	Staff member arrivals and departures by professional category	43
40.	Staff departures by professional category, type of contract and reason for leaving	44

Definitions

Departments / Units

Code Department

BE	Beams
DG	Director-General
DGS	Occupational Health and Safety and Environmental Protection Unit
EN	Engineering
FP	Finance and Procurement
GS	General Infrastructure Services
HR	Human Resources
IT	Information Technology
PF	Pension Fund
PH	Physics
TE	Technology

Professional Categories

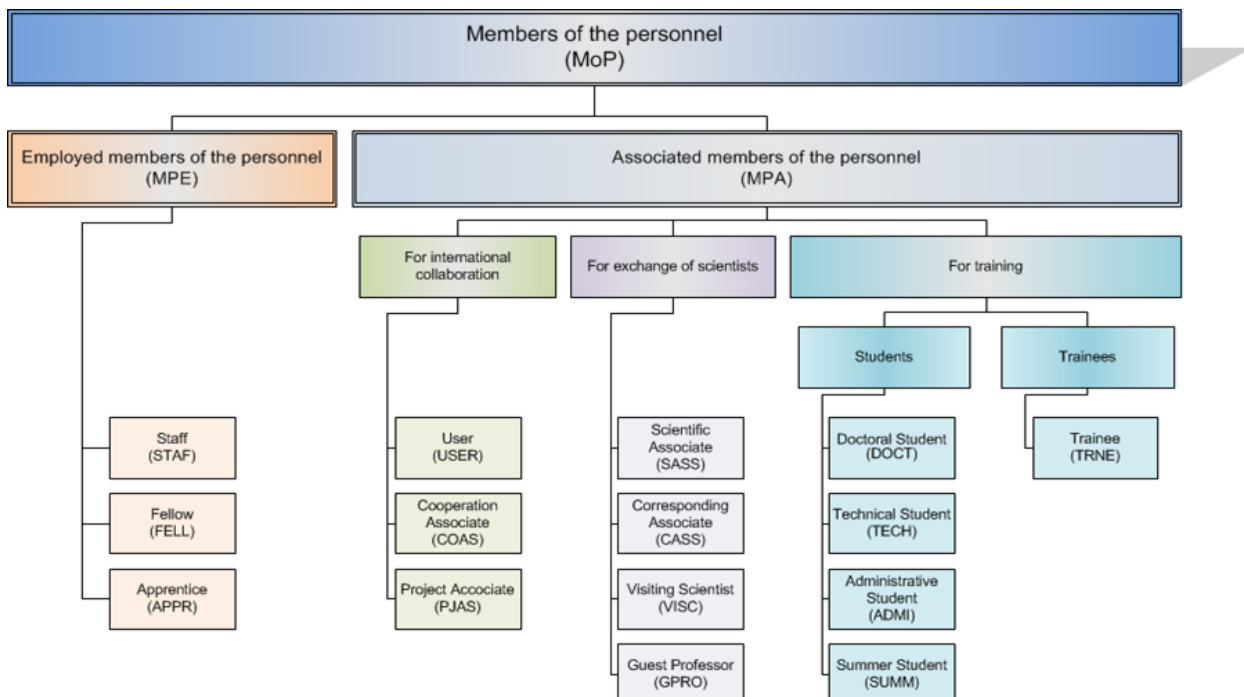
Code Category

- 1 Scientific Work (Experimental and Theoretical Physics)
- 2 Scientific and Engineering Work (other than Experimental and Theoretical Physics)
- 3 Technical Work
- 4 Manual Work, Crafts and Trades
- 5a Administrative Work (Professional Level)
- 5b Office and Administrative Work
- 5c Office Work

Types of Contract

- LD Limited Duration Contract
- IC Indefinite Contract

Grouping of the Personnel



Nationalities

Member States include Candidate Member States and Pre-stage Associate

NMS Non-member states

According to the international ISO codes

AF	AFGHANISTAN
AL	ALBANIA
AM	ARMENIA
AR	ARGENTINA
AT	AUSTRIA
AU	AUSTRALIA
AZ	AZERBAIJAN
BA	BOSNIA
BD	BANGLADESH
BE	BELGIUM
BF	BURKINA FASO
BG	BULGARIA
BO	BOLIVIA
BR	BRAZIL
BY	BELARUS
CA	CANADA
CH	SWITZERLAND
CL	CHILE
CM	UN.-REP. OF CAMEROON
CN	CHINA
CO	COLOMBIA
CU	CUBA
CV	CAPE VERDE
CY	CYPRUS
CZ	CZECH REPUBLIC
DE	GERMANY
DK	DENMARK
DZ	ALGERIA
EC	ECUADOR
EE	ESTONIA
EG	EGYPT
ES	SPAIN
FI	FINLAND
FR	FRANCE
GB	UNITED KINGDOM
GE	GEORGIA
GI	GIBRALTAR
GR	GREECE
HK	HONG-KONG
HR	CROATIA
HU	HUNGARY
ID	INDONESIA
IE	IRELAND
IL	ISRAEL
IN	INDIA
IR	IRAN
IS	ICELAND
IT	ITALY
JO	JORDAN
JP	JAPAN
KE	KENYA

KP	DEM. PEO. REP. OF KOREA
KR	REPUBLIC OF KOREA
KW	KUWAIT
KZ	KAZAKHSTAN
LB	LEBANON
LK	SRI LANKA
LT	LITHUANIA
LU	LUXEMBURG
MA	MOROCCO
ME	MONTENEGRO
MG	MADAGASCAR
MK	T.F.Y.R. OF MACEDONIA
MT	MALTA
MU	MAURITIUS
MX	MEXICO
MY	MALAYSIA
NL	NETHERLANDS
NO	NORWAY
NP	NEPAL
NZ	NEW ZEALAND
PE	PERU
PH	PHILIPPINES
PK	PAKISTAN
PL	POLAND
PS	PALESTINIAN AUTHORITY, PASSPORT ISSUED BY
PT	PORTUGAL
RO	ROMANIA
RS	SERBIA
RU	RUSSIA
SA	SAUDI ARABIA
SE	SWEDEN
SG	SINGAPORE
SI	SLOVENIA
SK	SLOVAKIA
SN	SENEGAL
SV	EL SALVADOR
SX	SINT MAARTEN (DUCH PART)
SY	SYRIEN ARAB REPUBLIC
TH	THAILAND
TN	TUNISIA
TR	TURKEY
TW	TAIWAN
UA	UKRAINE
US	UNITED STATES OF AMERICA
UZ	UZBEKISTAN
VE	VENEZUELA
VN	VIETNAM
ZA	SOUTH AFRICA
ZW	ZIMBABWE

NOTES

Please note that 2513 Staff in 'headcount' equates to 2481.3 FTEs for 2013. 2412.1 FTEs were charged to CERN accounts and 69.2 FTEs to team accounts. The "Paid but Not Available personnel accounts" for 21.8 FTEs, which means a total of 2390.3 active FTEs on CERN accounts.

All figures refer to a headcount as at 31.12.2013 unless specified otherwise.

TABLE 1. Total Number of Members of the Personnel by Department and Status - 31.12.2013

	Staff Members	Fellows	Apprentices	Total CERN MPEs	MPA exch. scient.	MPA int. coll.	Students & Trainees	Total CERN MPAs	Grand Total
BE	385	84		469	67	137	105	309	778
DG	102	9		111	16	6	8	30	141
DGS	85	22		107	3	6	12	21	128
EN	372	84		456	28	53	57	138	594
FP	75	6		81	6	16	12	34	115
GS	246	21		267		14	24	38	305
HR	74	3	21	98			9	9	107
IT	221	56		277	5	77	43	125	402
PF	19	1		20				0	20
PH	491	206		697	484	10172	138	10794	11491
TE	443	74		517	25	130	73	228	745
Total	2513	566	21	3100	634	10611	481	11726	14826

Departures on 31st December are not deducted from end year strength

Figure 1: Members of the Personnel - 31.12.2013

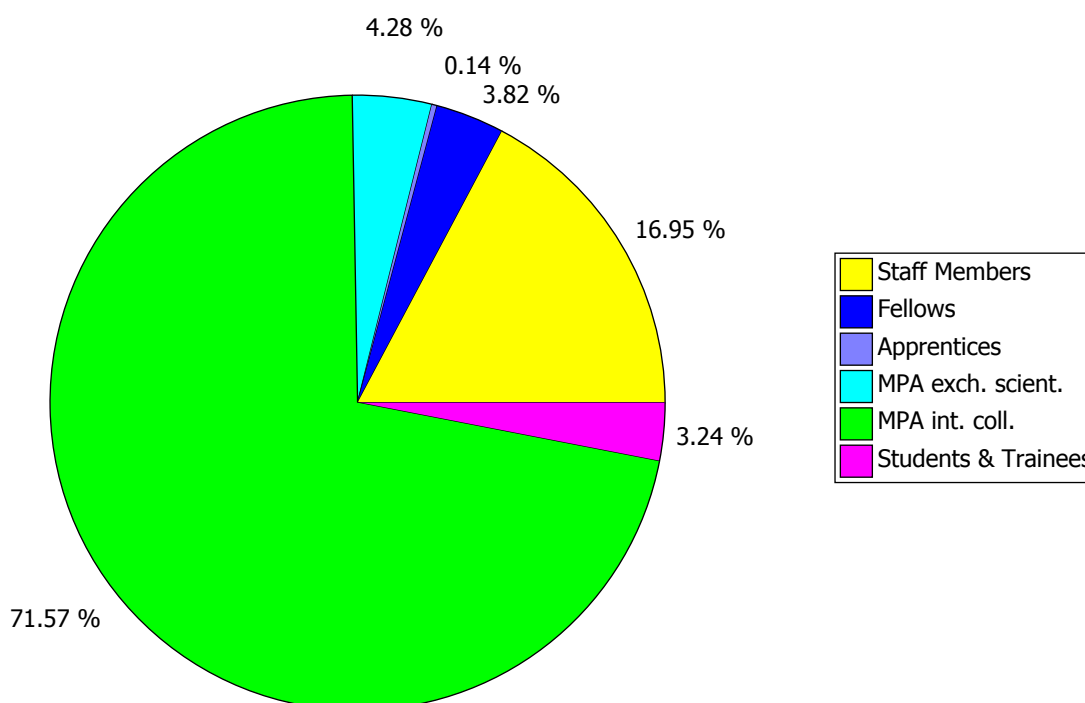


TABLE 1a. Associated Members of the Personnel by Department and CERN Class - 31.12.2013

	Students & Trainees											Total Students & Trainees
	ADMI		DOCT			TECH			TRNE			
	MS	Total	MS	NMS	Total	MS	NMS	Total	MS	NMS	Total	
BE	2	2	51	1	52	38		38	13		13	105
DG	5	5							3		3	8
DGS			5		5	4	1	5	2		2	12
EN	2	2	15		15	24		24	15	1	16	57
FP	5	5	1		1	4		4	2		2	12
GS	4	4	1		1	11		11	7	1	8	24
HR	3	3				2		2	4		4	9
IT	3	3	2		2	26		26	9	3	12	43
PH	1	1	68	3	71	36	1	37	27	2	29	138
TE	2	2	24		24	33	1	34	13		13	73
Total	27	27	167	4	171	178	3	181	95	7	102	481

	MPA for exchange of scientists														Total MPA exch. scient.
	CASS		GPRO			SASS			UPAS			VISC			
	MS	Total	MS	NMS	Total	MS	NMS	Total	MS	NMS	Total	MS	NMS	Total	
BE						1		1	35	15	50	6	10	16	67
DG			1	4	5	3	1	4		2	2	2	3	5	16
DGS						1		1	2		2				3
EN									7		7	14	7	21	28
FP	1	1							5		5				6
IT									4	1	5				5
PH	3	3	3	4	7	34	4	38	114	34	148	219	69	288	484
TE						2		2	10	6	16	6	1	7	25
Total	4	4	4	8	12	41	5	46	177	58	235	247	90	337	634

	MPA for international collaboration									Total MPA int. coll.
	COAS			PJAS			USER			
	MS	NMS	Total	MS	NMS	Total	MS	NMS	Total	
BE	64	28	92	32	13	45				137
DG	3	2	5	1		1				6
DGS	4	1	5	1		1				6
EN	17	1	18	30	5	35				53
FP	16		16							16
GS	1	1	2	8	4	12				14
IT	2		2	8		8	46	21	67	77
PH	75	25	100	33	19	52	6173	3847	10020	10172
TE	11	31	42	84	4	88				130
Total	193	89	282	197	45	242	6219	3868	10087	10611

please see page 3 for full names of the CERN classes above

TABLE 2. Evolution in the number of Staff Members, Fellows and MPAs over the last 5 years (Students & Trainees and Apprentices excluded)

	Staff Members		Fellows		CERN MPEs		MPAs (excl. Users)		Users		Grand Total	
31.12.2009	2 377	-23	371	77	2 748	55	291	1	9 495	355	12 534	410
31.12.2010	2 427	49	431	60	2 858	102	284	-7	9 992	497	13 134	599
31.12.2011	2 424	-3	477	46	2 901	65	306	22	10 388	396	13 595	461
31.12.2012	2 512	88	540	63	3 052	217	372	66	10 823	435	14 247	652
31.12.2013	2 513	1	566	26	3 079	27	1 158	786	10 087	-736	14 324	449

TABLE 3. Number of Fellows by Category - 31.12.2013

Category	Nr of Fellows	%
CERN	315	55.7
Marie Curie	134	23.7
Graduate Engineering Training	94	16.6
Technical Training Experience	23	4.1
Total	566	100

Figure 2. Evolution in the number of Staff Members, Fellows and MPAs over the last 10 years (Students & Trainees and Apprentices excluded)

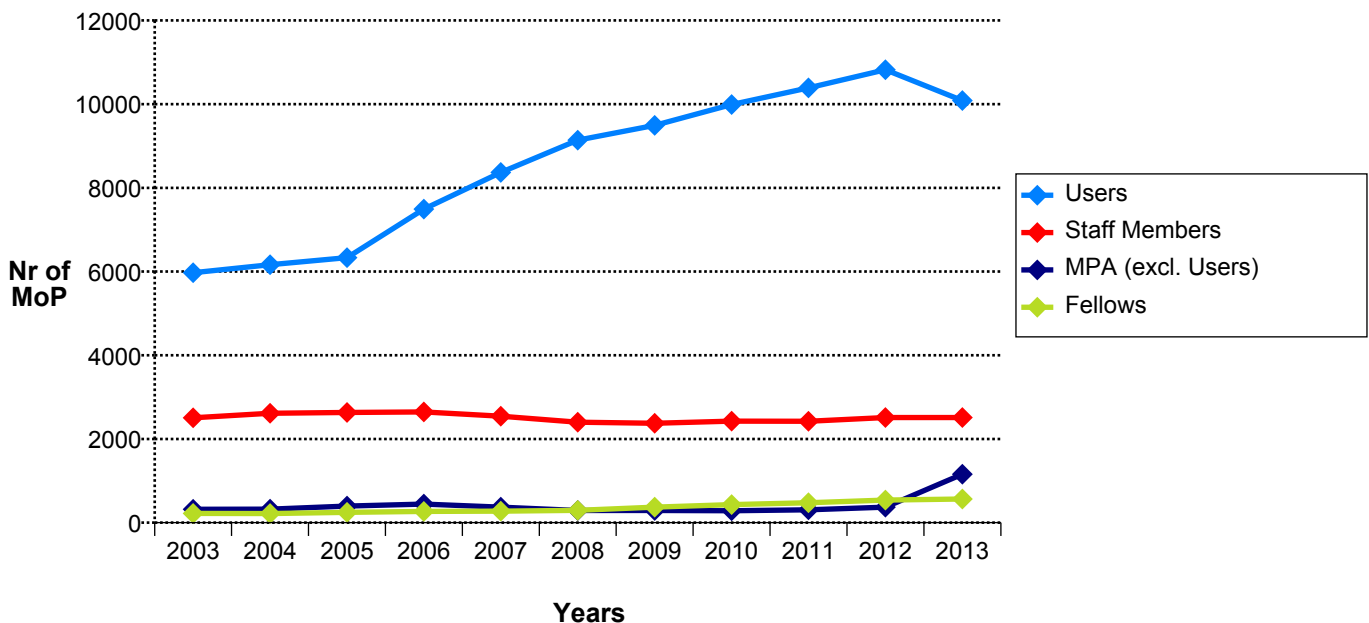


TABLE 4. Total Number of Female Members of the Personnel by Department and Status - 31.12.2013

	Staff Members	Fellows	Apprentices	Total CERN MPEs	MPA exch. scient.	MPA int. coll.	Students & Trainees	Total CERN MPAs	Grand Total
BE	54	20		74	4	22	25	51	125
DG	63	5		68	5	5	7	17	85
DGS	23	10		33	2	2	2	6	39
EN	36	19		55	3	13	11	27	82
FP	52	2		54	2	3	2	7	61
GS	56	6		62		2	9	11	73
HR	58	2	5	65			6	6	71
IT	33	5		38	1	17	4	22	60
PF	10			10				0	10
PH	87	27		114	66	1748	32	1846	1960
TE	42	13		55	5	11	14	30	85
Total	514	109	5	628	88	1823	112	2023	2651
%	20.45	19.26	23.81	20.26	13.88	17.18	23.28	17.25	17.88

Figure 3: Evolution in the Percentage of Female Members of the Personnel over the last 10 years

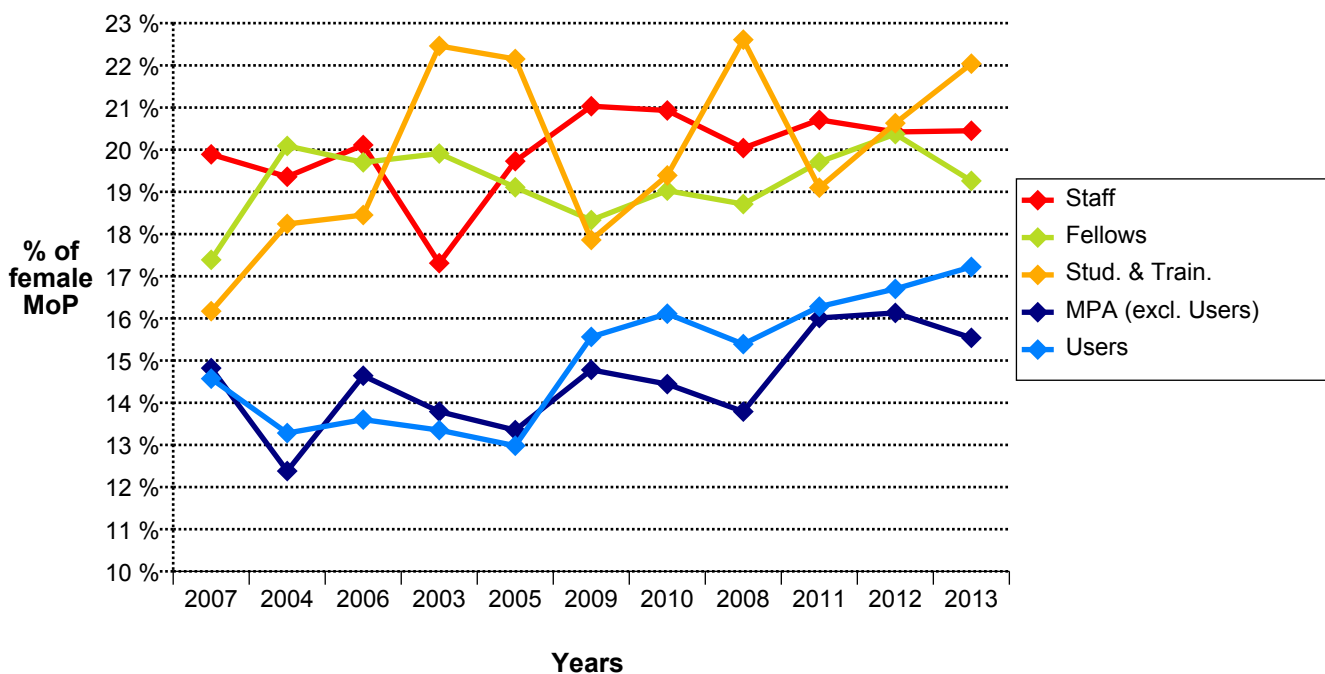


TABLE 5A. Staff Members by professional category and working hours - 31.12.2013

Working hours	1. Research Physicists	2. Scientific & Eng. work	3. Technical work	4. Manual work	5a. Prof. Admin. work	5b. Office and Admin. work	5c. Office work	Total	%
20		5	6		1	6		18	0.72 *
24	1	1	4		2	3		11	0.44
28		1			1	4		6	0.24
30		1	1					2	0.08
32	1	8	7			14	1	31	1.23
34		2			2			4	0.16
36		13	8		5	23		49	1.95
40	75	1002	859	117	126	202	11	2392	95.19
Total	77	1033	885	117	137	252	12	2513	100
%	3.06	41.11	35.22	4.66	5.45	10.03	0.48	100	

* Including 11 Staff Members on PRP

TABLE 5B. Staff Members by professional category, gender and programmes for flexibility in working conditions - 31.12.2013

		1. Research Physicists	2. Scientific & Eng. work	3. Technical work	4. Manual work	5a. Prof. Admin. work	5b. Office and Admin. work	5c. Office work	Total	%
Work from home	F		6	3		11	10		30	1.19
	M		7	7		4			18	0.72
	Total		13	10		15	10		48	1.91
Saved Leave	F		76	34	4	51	142	3	310	12.34
	M	3	332	357	44	33	8	3	780	31.04
	Total	3	408	391	48	84	150	6	1090	43.37

Saved Leave	1 Slice (5,5 days)	2 Slices (11 days)	3 Slices (16,5 days)	4 Slices (22 days)	Total
F	120	46	14	130	310
%	38.71	14.84	4.52	41.94	100
M	526	89	34	131	780
%	67.44	11.41	4.36	16.79	100
Total	646	135	48	261	1090
%	59.27	12.39	4.40	23.94	100

TABLE 6. Staff Members, Fellows and MPAs (excluding Users) by Professional Category, at End 2013 and 2012

	2013						2012					
	Staff		Fellows & MPA (excl. USER)		Total		Staff		Fellows + Associates		Total	
	Nr	%	Nr	%	Nr	%	Nr	%	Nr	%	Nr	%
1. Research Physicists	77	3.06	873	50.67	950	22.43	79	3.14	260	28.51	339	9.90
2. Scientific & Eng. work	1033	41.11	675	39.18	1708	40.32	1021	40.64	605	66.34	1626	47.49
3. Technical work	885	35.22	119	6.91	1004	23.70	883	35.15	27	2.96	910	26.58
4. Manual work	117	4.66	1	0.06	118	2.79	132	5.25			132	3.86
5a. Prof. Admin. work	137	5.45	51	2.96	188	4.44	124	4.94	18	1.97	142	4.15
5b. Office and Admin. work	252	10.03	4	0.23	256	6.04	260	10.35	2	0.22	262	7.65
5c. Office work	12	0.48			12	0.28	13	0.52			13	0.38
Total	2513	100	1723	100	4236	100	2512	100	912	100	3424	100

Figure 4. Female Staff Members by Professional Category - 31.12.2013

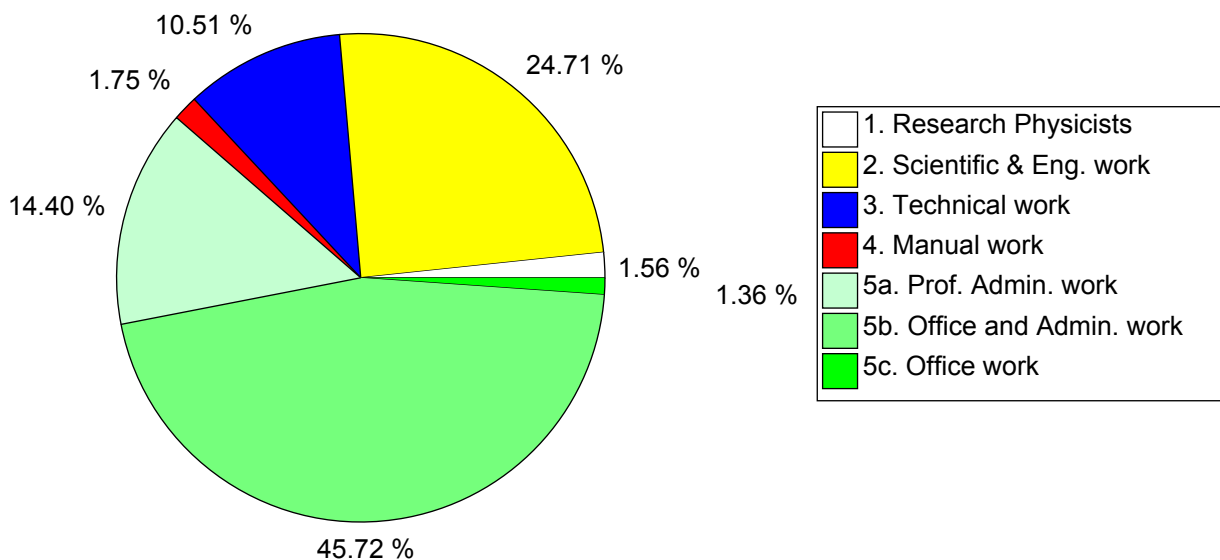


TABLE 7A. Staff Members, Fellows and MPAs (excluding Users) by Gender and Professional Category - 31.12.2013

Professional Category	Staff Members				Fellows				MPA (excl. Users)			
	F	M	Total	%	F	M	Total	%	F	M	Total	%
1. Research Physicists	8	69	77	3.06	14	82	96	16.96	119	659	778	67.18
%	10.39	89.61	100		14.58	85.42	100		15.30	84.70	100	
2. Scientific & Eng. work	127	906	1033	41.11	82	327	409	72.26	23	243	266	22.97
%	12.29	87.71	100		20.05	79.95	100		8.65	91.35	100	
3. Technical work	54	831	885	35.22	2	40	42	7.42	9	68	77	6.65
%	6.10	93.90	100		4.76	95.24	100		11.69	88.31	100	
4. Manual work	9	108	117	4.66						1	1	0.09
%	7.69	92.31	100							100.00	100	
5a. Prof. Admin. work	74	63	137	5.45	11	8	19	3.36	19	13	32	2.76
%	54.01	45.99	100		57.89	42.11	100		59.38	40.63	100	
5b. Office and Admin. work	235	17	252	10.03					4		4	0.35
%	93.25	6.75	100						100.00		100	
5c. Office work	7	5	12	0.48								
%	58.33	41.67	100									
Total	514	1999	2513	100	109	457	566	100	174	984	1158	100

TABLE 7B. Users by Gender and Professional Category - 31.12.2013

	Professional Category										Total	%
	1	%	2	%	3	%	4	%	5a	%		
Men	7053	81.92	778	89.94	497	92.21	4	100.00	18	26.09	8350	82.78
Women	1557	18.08	87	10.06	42	7.79			51	73.91	1737	17.22
Total	8610	100	865	100	539	100	4	100	69	100	10087	100

Professional Categories	1. Research Physicists	2. Scientific & Eng. work	3. Technical work	4. Manual work	5a. Prof. Admin. work	5b. Office and Admin. work	5c. Office work
-------------------------	------------------------	---------------------------	-------------------	----------------	-----------------------	----------------------------	-----------------

Figure 7b: Female Users by Professional Category - 31.12.2013

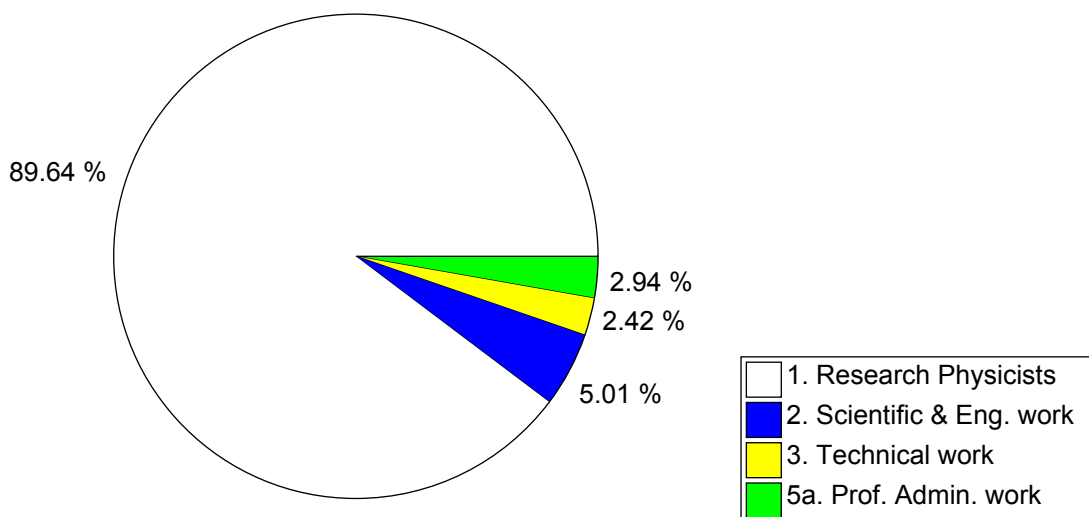


TABLE 8. Staff Members by Professional Category over the past 10 years

Prof. Category	2003	2004	2005	2006	2007	2008	2009	2010	2011	2012	2013
1	72	74	73	76	78	71	74	75	77	79	77
2	953	958	957	980	969	914	908	947	969	1021	1033
3	862	881	898	900	867	838	826	850	848	883	885
4	205	224	233	224	208	190	171	157	142	132	117
5A	128	126	122	122	111	106	109	121	120	124	137
5B	249	305	308	303	279	256	266	256	253	260	252
5C	38	46	44	40	32	25	23	21	15	13	12
Total	2507	2614	2635	2645	2544	2400	2377	2427	2424	2512	2513

Professional Categories	1. Research Physicists	2. Scientific & Eng. work	3. Technical work	4. Manual work	5a. Prof. Admin. work	5b. Office and Admin. work	5c. Office work
-------------------------	------------------------	---------------------------	-------------------	----------------	-----------------------	----------------------------	-----------------

Figure 8. Staff Members by Professional Category over the past 10 years

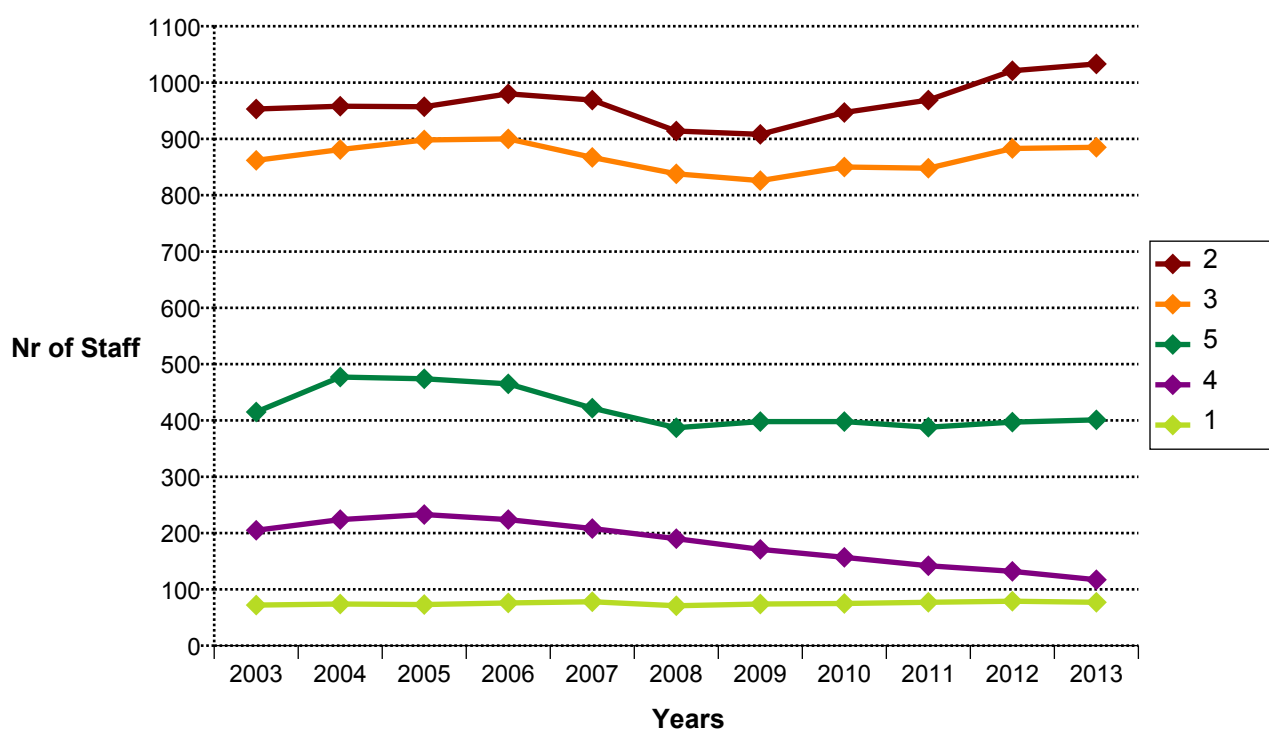


TABLE 9A. Users by Nationality and Professional Category - 31.12.2013

Professional Category

Nationality	1. Research Physicists	2. Scientific & Eng. work	3. Technical work	4. Manual work	5a. Prof. Admin. work	Total
AT	76	5	6			87
BE	92	7	3		1	103
BG	54	8	9		2	73
CH	123	19	21	2	6	171
CZ	168	21	8	1	1	199
DE	1010	36	45		6	1097
DK	41	5	5			51
ES	267	34	15			316
FI	71	2	1		7	81
FR	484	158	63	1	10	716
GB	537	45	27		5	614
GR	137	8				145
HU	56	9				65
IL	36	5	6		2	49
IT	1344	103	167		5	1619
NL	102	27	19		1	149
NO	49	10	1			60
PL	193	18	7			218
PT	85	6	3			94
RO	104	9			1	114
RS	38	2				40
SE	64	5	3			72
SK	73	13				86
NMS	3406	310	130		22	3868
Total	8610	865	539	4	69	10087
%	85.36	8.58	5.34	0.04	0.68	100

TABLE 9B. Non-Member State Users by Nationality and Professional Category - 31.12.2013

Nationality	1. Research Physicists	2. Scientific & Eng. work	3. Technical work	5a. Prof. Admin. work	Total
AF	1				1
AL	2				2
AM	21	2	1		24
AR	11				11
AU	23	1			24
AZ	7				7
BA	1				1
BD	3		1		4
BO	3				3
BR	81	19	4		104
BY	42	4			46
CA	122	4	3	1	130
CL	11				11
CM	1				1
CN	242	22	7	2	273
CO	25	4			29
CU	7				7
CV	1				1
CY	15	1			16
DZ	6				6
EC	3				3
EE	15	1			16
EG	14				14
GE	32	3	1		36
GI	1				1
HK	1				1
HR	36				36
ID	1				1
IE	19	1		1	21
IN	198	11	5	1	215
IR	24				24
IS	4				4
JO	1	1			2
JP	236	6			242
KE	1				1
KP	1				1
KR	105	2	3	1	111
KW	1				1
KZ		1			1
LB	11				11
LK	5				5
LT	15	2		1	18
LU	4				4
MA	11	1			12
ME	3				3
MG	4				4

Nationality	1. Research Physicists	2. Scientific & Eng. work	3. Technical work	5a. Prof. Admin. work	Total
MK	1				1
MU	1				1
MX	61	2	1		64
MY	14		1		15
NP	2		1	1	4
NZ	7				7
PE	8				8
PH	1				1
PK	32	7	2		41
PS	4				4
RU	739	137	79	2	957
SA	2				2
SG	2				2
SI	16				16
SN	1				1
SV	1				1
SX	2				2
SY	1	1			2
TH	12				12
TN	3	2	1		6
TR	139	8		1	148
TW	37	3	2	2	44
UA	50	4			54
US	861	60	18	9	948
UZ	4				4
VE	9				9
VN	8				8
ZA	15				15
ZW	2				2
Total	3406	310	130	22	3868
%	88.06	8.01	3.36	0.57	100

TABLE 10. Users by nationality and experiment - 31.12.2013

	ATLAS	CMS	ALICE	LHCB	LHC	SPS	PS	RE	R&D	ISOLDE	OTHER	Total
AT	16	38					24	6		1	2	87
BE	8	67	1	2	1	3	2	2	1	15	1	103
BG	6	41	1	2		10	1	1		9	2	73
CH	50	45	2	28	1	11	8	14	3	1	8	171
CZ	116	2	27	1	4	20	11	2	3	3	10	199
DE	405	241	114	59	2	77	31	70	15	45	38	1097
DK	20	1	10	2		5	3			7	3	51
ES	105	83	9	41	1	2	17	20	9	10	19	316
FI	4	38	10		8	1	8	1		8	3	81
FR	233	134	85	61		49	19	46	15	23	51	716
GB	290	117	16	108		10	14	9		28	22	614
GR	66	40	10	3		2	1	9	1	2	11	145
HU	5	23	18		4	6	3		1	5		65
IL	39	2		1		1	1		1	1	3	49
IT	410	443	198	136	29	154	48	122	29	8	42	1619
NL	69	11	12	36		1	3	3	6	1	7	149
NO	27		23	2		1				4	3	60
PL	53	38	29	19	6	58	4	2		4	5	218
PT	31	11		1		8	6	13	9	14	1	94
RO	43	12	18	10		2	8	3	1	10	7	114
RS	16	11	2			4				3	4	40
SE	42	4	9	1			2			8	6	72
SK	37	4	29	2	1	5			1	6	1	86
NMS	1336	1277	476	196	11	167	100	133	36	47	89	3868
Total	3427	2683	1099	711	68	597	314	456	131	263	338	10087

TABLE 11. Users by professional category and yearly presence in % at CERN - 31.12.2013

	1. Research Physicists	2. Scientific & Eng. work	3. Technical work	4. Manual work	5a. Prof. Admin. work	Total
0-10%	2448	303	174		17	2942
11-20%	1952	170	132	2	3	2259
21-30%	1277	107	84	2	7	1477
31-40%	361	18	12		4	395
41-50%	288	17	16		3	324
51-60%	669	63	29		4	765
61-70%	229	35	19			283
71-80%	216	10	17			243
81-90%	156	8	4			168
91-100%	1014	134	52		31	1231
Total	8610	865	539	4	69	10087
%	85.36	8.58	5.34	0.04	0.68	100

Figure 11: Users by professional category and yearly presence in % at CERN - 31.12.2013

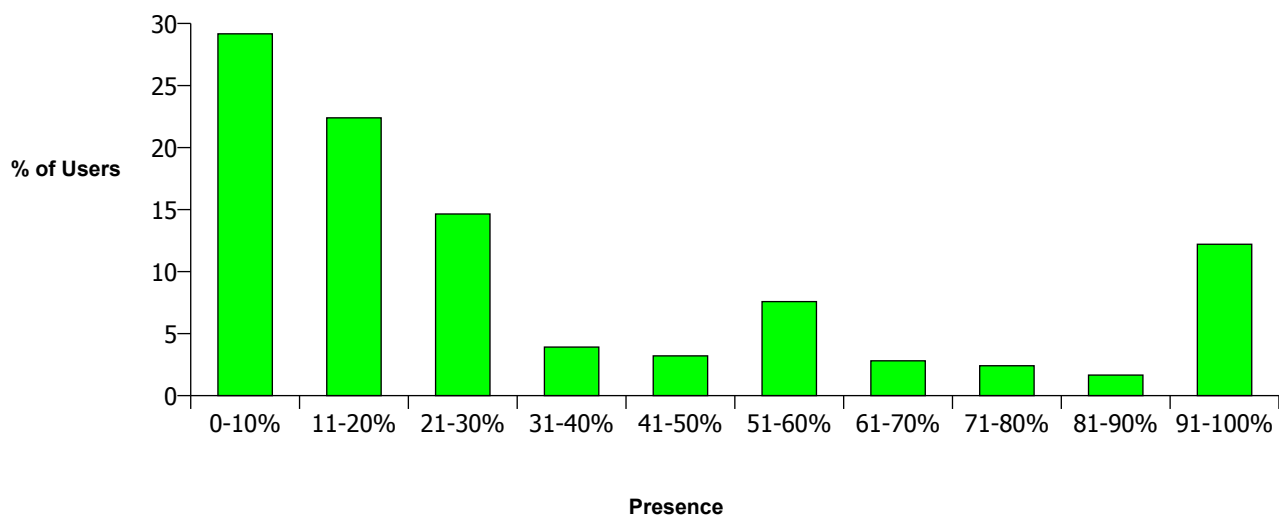


TABLE 12. Staff Members by Type of Contract and Years of Service - 31.12.2013

	Limited Duration Contract		Indefinite Contract		Total		Grand Total	%
	Full Time	Part Time	Full Time	Part Time	Full Time	Part Time		
>= 35			46	11	46	11	57	2.27
30-34			114	13	114	13	127	5.05
25-29			153	12	153	12	165	6.57
20-24			166	8	166	8	174	6.92
15-19			327	15	327	15	342	13.61
10-14			338	25	338	25	363	14.44
5-9	2		465	20	467	20	487	19.38
0-4	740	16	41	1	781	17	798	31.75
Total	742	16	1650	105	2392	121	2513	100

Note: Entry may have taken place under a different contract status, followed by conversion to Staff Member, in which case only the service as Staff Member is counted.

Figure 12: Evolution in the Average Number of Years of Service of Staff Members over the last 10 years

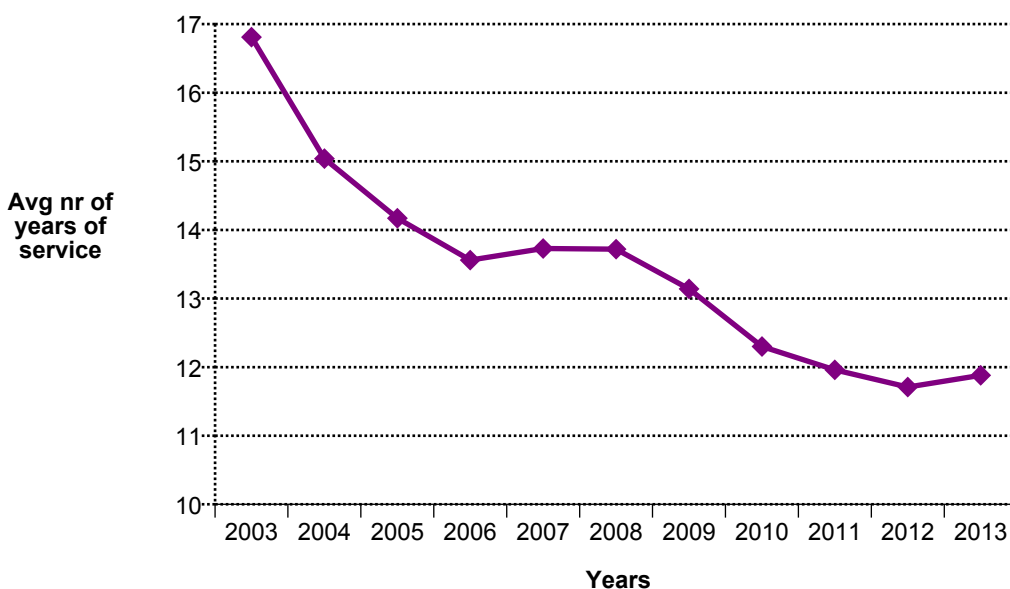


TABLE 13A. Staff Members by Professional Category and Type of Contract - 31.12.2013

Professional Category	Type of Contract				Total	%
	Limited Duration Contract	% of Total Category	Indefinite Contract	% of Total Category		
1. Research Physicists	35	45.45	42	54.55	77	3.06
2. Scientific & Eng. work	288	27.88	745	72.12	1033	41.11
3. Technical work	277	31.30	608	68.70	885	35.22
4. Manual work	35	29.91	82	70.09	117	4.66
5a. Prof. Admin. work	42	30.66	95	69.34	137	5.45
5b. Office and Admin. work	79	31.35	173	68.65	252	10.03
5c. Office work	2	16.67	10	83.33	12	0.48
Total	758	30.16	1755	69.84	2513	100

TABLE 13B. Staff Members by Gender and Type of Contract - 31.12.2013

Gender	Limited Duration Contract	%	Indefinite Contract	%	Total	%
	Men	605	30.27	1394	69.73	1999
Women	153	29.77	361	70.23	514	20.45
Total	758	30.16	1755	69.84	2513	100

Table 14. Evolution in the Numbers of Staff Members by Professional Category and Type of Contract over the past 5 years

		2009	%	2010	%	2011	%	2012	%	2013	%
1	LD	32	43.24	33	43.42	34	44.16	38	48.10	35	45.45
	IC	42	56.76	43	56.58	43	55.84	41	51.90	42	54.55
2	LD	205	22.58	231	24.42	235	24.25	283	27.72	288	27.88
	IC	703	77.42	715	75.58	734	75.75	738	72.28	745	72.12
3	LD	253	30.63	249	29.29	236	27.83	280	31.71	277	31.30
	IC	573	69.37	601	70.71	612	72.17	603	68.29	608	68.70
4	LD	63	36.84	48	30.57	40	28.17	38	28.79	35	29.91
	IC	108	63.16	109	69.43	102	71.83	94	71.21	82	70.09
5A	LD	29	26.61	32	26.67	33	27.50	38	30.65	42	30.66
	IC	80	73.39	88	73.33	87	72.50	86	69.35	95	69.34
5B	LD	106	39.85	78	30.12	70	27.67	81	31.15	79	31.35
	IC	160	60.15	181	69.88	183	72.33	179	68.85	173	68.65
5C	LD	9	39.13	4	21.05	3	20.00	3	23.08	2	16.67
	IC	14	60.87	15	78.95	12	80.00	10	76.92	10	83.33
Total	LD	697	29.32	675	27.81	651	26.86	761	30.29	758	30.16
	IC	1680	70.68	1752	72.19	1773	73.14	1751	69.71	1755	69.84
Grand Total		2377		2427		2424		2512		2513	

Figure 14: Evolution in the Numbers of Staff Members by Type of Contract over the past 5 years

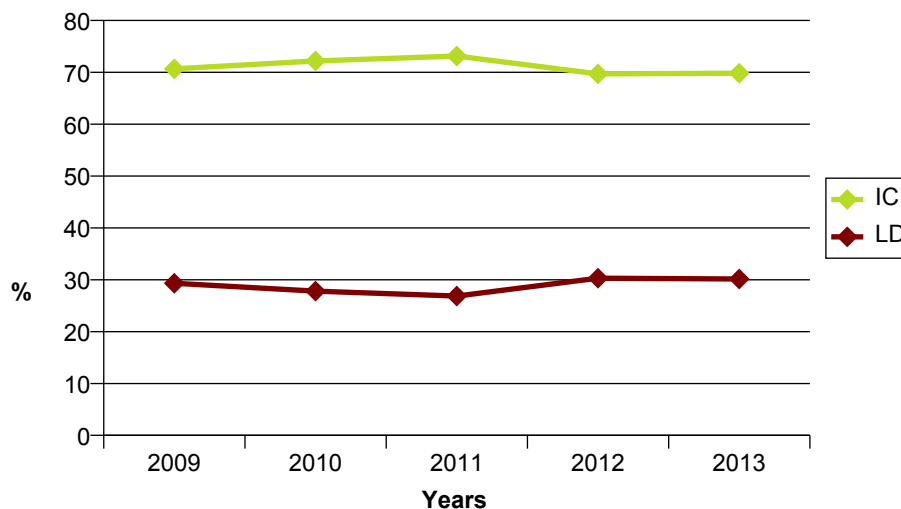


TABLE 15. Evolution in the number of children, infants and personnel receiving family allowance over the last 10 years

Year	Personnel receiving Family allow.	Total Nr of Children	Nr of Infants (<3 years)	Average Age of Children as at 31.12.
2003	2046	2039	290	10.94
2004	2149	2289	365	10.33
2005	2081	2379	384	10.05
2006	2082	2471	404	9.92
2007	2002	2496	385	10.02
2008	1900	2477	380	10.15
2009	1900	2560	398	10.22
2010	1953	2679	433	10.03
2011	1952	2753	423	10.05
2012	2004	2884	466	10.05
2013	1994	2893	394	10.26

Figure 15: Evolution in the Average Age of Children of Members of the Personnel over the last 10 years



TABLE 16. Staff Members by Nationality and Type of Residence - 31.12.2013

Nationality	SRR 1996 or prior				SRR 2007 or later				Total	
	Non Resident		Resident		International Indemnity		Non International Indemnity			
	Nb.	%	Nb.	%	Nb.	%	Nb.	%	Nb.	%
AT	32	3.14			16	2.96	1	0.19	49	1.95
BE	92	9.02	1	0.24	13	2.41	1	0.19	107	4.26
BG	5	0.49			6	1.11	2	0.37	13	0.52
CH	31	3.04	70	16.79	6	1.11	65	12.13	172	6.84
CZ	3	0.29			2	0.37			5	0.20
DE	130	12.75	6	1.44	40	7.41	6	1.12	182	7.24
DK	13	1.27			5	0.93	2	0.37	20	0.80
ES	61	5.98	9	2.16	50	9.26	6	1.12	126	5.01
FI	13	1.27			11	2.04	3	0.56	27	1.07
FR	198	19.41	302	72.42	114	21.11	413	77.05	1027	40.87
GB	137	13.43	6	1.44	53	9.81	16	2.99	212	8.44
GR	9	0.88			13	2.41	1	0.19	23	0.92
HU	4	0.39			4	0.74	1	0.19	9	0.36
IL					1	0.19			1	0.04
IT	149	14.61	18	4.32	106	19.63	11	2.05	284	11.30
NL	58	5.69	1	0.24	9	1.67	1	0.19	69	2.75
NO	7	0.69			5	0.93			12	0.48
PL	22	2.16			39	7.22			61	2.43
PT	19	1.86	4	0.96	24	4.44	2	0.37	49	1.95
RO	1	0.10			7	1.30			8	0.32
RS					1	0.19			1	0.04
SE	22	2.16			5	0.93	4	0.75	31	1.23
SK	9	0.88			7	1.30			16	0.64
NMS	5	0.49			3	0.56	1	0.19	9	0.36
Total	1020	100	417	100	540	100	536	100	2513	100

SRR = Staff Rules and Regulations

**TABLE 17. Other Members of the Personnel by Nationality and Status -
31.12.2013**

	Fellows		Appr.		Stud. & Train.*		MPA (excl. Users)*		Users		Grand Total	
	Nb.	%	Nb.	%	Nb.	%	Nb.	%	Nb.	%	Nb.	%
AT	14	2.47			12	2.49	42	3.63	87	0.86	155	1.26
BE	8	1.41			3	0.62	5	0.43	103	1.02	119	0.97
BG	5	0.88			4	0.83	13	1.12	73	0.72	95	0.77
CH	11	1.94	19	90.48	12	2.49	39	3.37	171	1.70	252	2.05
CZ	7	1.24			5	1.04	7	0.60	199	1.97	218	1.77
DE	69	12.19			61	12.68	72	6.22	1097	10.88	1299	10.55
DK	2	0.35			3	0.62	5	0.43	51	0.51	61	0.50
ES	75	13.25	1	4.76	39	8.11	88	7.60	316	3.13	519	4.22
FI	6	1.06			5	1.04	13	1.12	81	0.80	105	0.85
FR	62	10.95			34	7.07	71	6.13	716	7.10	883	7.17
GB	26	4.59			24	4.99	50	4.32	614	6.09	714	5.80
GR	30	5.30			57	11.85	41	3.54	145	1.44	273	2.22
HU	11	1.94			15	3.12	5	0.43	65	0.64	96	0.78
IL	1	0.18					7	0.60	49	0.49	57	0.46
IT	91	16.08			78	16.22	228	19.69	1619	16.05	2016	16.37
NL	7	1.24	1	4.76	6	1.25	10	0.86	149	1.48	173	1.41
NO	2	0.35			16	3.33	15	1.30	60	0.59	93	0.76
PL	35	6.18			53	11.02	116	10.02	218	2.16	422	3.43
PT	26	4.59			21	4.37	11	0.95	94	0.93	152	1.23
RO	7	1.24			12	2.49	10	0.86	114	1.13	143	1.16
RS					1	0.21	1	0.09	40	0.40	42	0.34
SE	7	1.24			3	0.62	8	0.69	72	0.71	90	0.73
SK	3	0.53			3	0.62	6	0.52	86	0.85	98	0.80
NMS	61	10.78			14	2.91	295	25.47	3868	38.35	4238	34.42
Total	566	100	21	100	481	100	1158	100	10087	100	12313	100
%	4.60		0.17		3.91		9.40		81.92		100	

* partially or totally paid by CERN

TABLE 18. Staff Members by Nationality and Professional Category - 31.12.2013

Nat.	Professional Category							Total
	1	2	3	4	5a	5b	5c	
AT	2	40	3		2	2		49
BE	2	48	38		14	5		107
BG		8	2		1	2		13
CH	1	46	74	6	8	35	2	172
CZ		4	1					5
DE	16	118	31	2	9	6		182
DK	1	12	5		1	1		20
ES	4	75	26	9	8	4		126
FI		5	7	7	4	4		27
FR	8	197	543	79	41	151	8	1027
GB	7	96	51	9	26	22	1	212
GR	3	17	2			1		23
HU	1	4	2		1	1		9
IL	1							1
IT	18	197	46	3	12	7	1	284
NL	4	36	25		3	1		69
NO	1	3	5		2	1		12
PL	1	51	7		2			61
PT	3	30	13	1	1	1		49
RO		7	1					8
RS	1							1
SE		18	3	1	2	7		31
SK		15				1		16
NMS	3	6						9
Total	77	1033	885	117	137	252	12	2513

Professional Categories	1. Research Physicists	2. Scientific & Eng. work	3. Technical work	4. Manual work	5a. Prof. Admin. work	5b. Office and Admin. work	5c. Office work
-------------------------	------------------------	---------------------------	-------------------	----------------	-----------------------	----------------------------	-----------------

TABLE 19. Staff Members by Nationality, Career Path and Gender - 31.12.2013

Career Path

Nat.	A		B		C		D		E		F		G		Grand Total	
	All Staff	F	All Staff	F	All Staff	F	All Staff	F	All Staff	F	All Staff	F	All Staff	F	All Staff	F
AT			1	1	1		3	2	30	7	14	1			49	11
BE					7	3	36	5	33	8	24		7		107	16
BG			2	2	1		1		8	3	1				13	5
CH			30	14	37	16	50	9	27	4	18	3	10		172	46
CZ							1		3		1				5	
DE	2		4	4	8	1	25	2	59	5	70	3	13	1	181	16
DK			1	1			5		10	1	3		1		20	2
ES	7	1	6	3	9	2	17	2	64	21	21	5	2		126	34
FI	6		4	1	1		7	3	4		4		1		27	4
FR	32	7	192	62	397	81	160	29	163	45	67	17	16	1	1027	242
GB	8	1	10	5	30	11	35	10	66	15	49	6	14	1	212	49
GR			1	1			2		13	2	6		1	1	23	4
HU			1	1	1	1	1		5	1	1	1			9	4
IL									1						1	
IT	3		7	3	20	2	27	3	133	21	76	10	18	3	284	42
NL			1		6	1	19	1	19	2	19		5	1	69	5
NO					1	1	5	2	3		1		2		12	3
PL					6	1	1		50	5	3	1	1		61	7
PT			3		6	1	6		28	3	6	2			49	6
RO					1	1			6	1	1				8	2
RS									1						1	
SE	1		4	4	3	2	3	1	9	3	11	1			31	11
SK					1	1			11	1	3		1		16	2
NMS									5	1	3	2	1		9	3
Total	59	9	267	102	536	125	404	69	751	149	402	52	93	8	2512	514

Above table does not include 'Hors Cadre' (1)

TABLE 20. Staff Members by Nationality, Gender and Professional Category - 31.12.2013

Nat.		Professional Category							Total
		1. Research Physicists	2. Scientific & Eng. work	3. Technical work	4. Manual work	5a. Prof. Admin. work	5b. Office and Admin. work	5c. Office work	
AT	F	1	6	1		1	2		11
	M	1	34	2		1			38
BE	F		3	3		5	5		16
	M	2	45	35		9			91
BG	F		3				2		5
	M		5	2		1			8
CH	F		4	5	1	3	32	1	46
	M	1	42	69	5	5	3	1	126
CZ	M		4	1					5
DE	F		4	2		5	5		16
	M	16	114	29	2	4	1		166
DK	F					1	1		2
	M	1	12	5					18
ES	F	1	20	4	1	5	3		34
	M	3	55	22	8	3	1		92
FI	F						4		4
	M		5	7	7	4			23
FR	F	1	33	26	7	29	141	5	242
	M	7	164	517	72	12	10	3	785
GB	F	1	6	4		15	22	1	49
	M	6	90	47	9	11			163
GR	F	1	2				1		4
	M	2	15	2					19
HU	F		1	1		1	1		4
	M	1	3	1					5
IL	M	1							1
IT	F	1	28	2		5	6		42
	M	17	169	44	3	7	1	1	242
NL	F		2	2		1			5
	M	4	34	23		2	1		64
NO	F			2			1		3
	M	1	3	3		2			9
PL	F	1	4	1		1			7
	M		47	6		1			54
PT	F		4			1	1		6
	M	3	26	13	1				43
RO	F		1	1					2
	M		6						6
RS	M	1							1
SE	F		3			1	7		11
	M		15	3	1	1			20
SK	F		1				1		2
	M		14						14
NMS	F	1	2						3
	M	2	4						6
Total	F	8	127	54	9	74	235	7	514
	M	69	906	831	108	63	17	5	1999
		77	1033	885	117	137	252	12	2513

TABLE 21. Evolution in the Number of Staff Members by Age Range over the last 10 years

	2003	2008	2013
19-25	41	20	26
26-30	161	183	139
31-35	344	301	381
36-40	383	426	427
41-45	291	414	450
46-50	232	314	420
51-55	333	248	323
56-60	480	308	232
61-65	242	186	115
Total	2507	2400	2513

Figure 21: Evolution in the Number of Staff Members by Age Range over the last 10 years

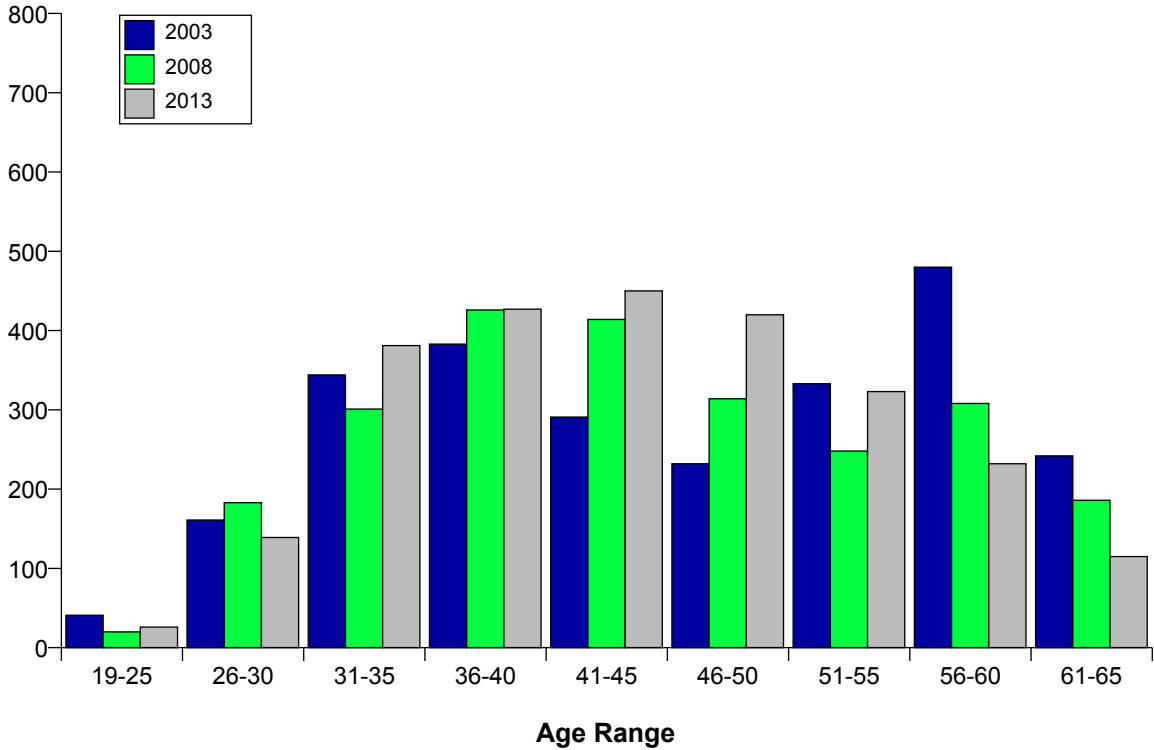


TABLE 22. Staff Members by Age Range and Professional Category - 31.12.2013

	1. Research Physicists	2. Scientific & Eng. work	3. Technical work	4. Manual work	5a. Prof. Admin. work	5b. Office and Admin. work	5c. Office work	Total	%
> 65		1						1	0.04
61-65	5	40	39	9	8	12	1	114	4.54
56-60	11	100	73	18	7	20	3	232	9.23
51-55	11	145	102	12	26	23	4	323	12.85
46-50	8	190	135	20	30	36	1	420	16.71
41-45	11	173	170	16	27	52	1	450	17.91
36-40	21	172	143	18	19	52	2	427	16.99
31-35	9	157	144	20	15	36		381	15.16
26-30	1	54	62	4	4	14		139	5.53
<= 25		1	17		1	7		26	1.03
Total	77	1033	885	117	137	252	12	2513	100
Average Age	45.5	44.5	43.1	45.7	45.7	43.0	51.1	44.1	

Figure 22: Evolution in the Average Age of Staff Members over the last 10 years

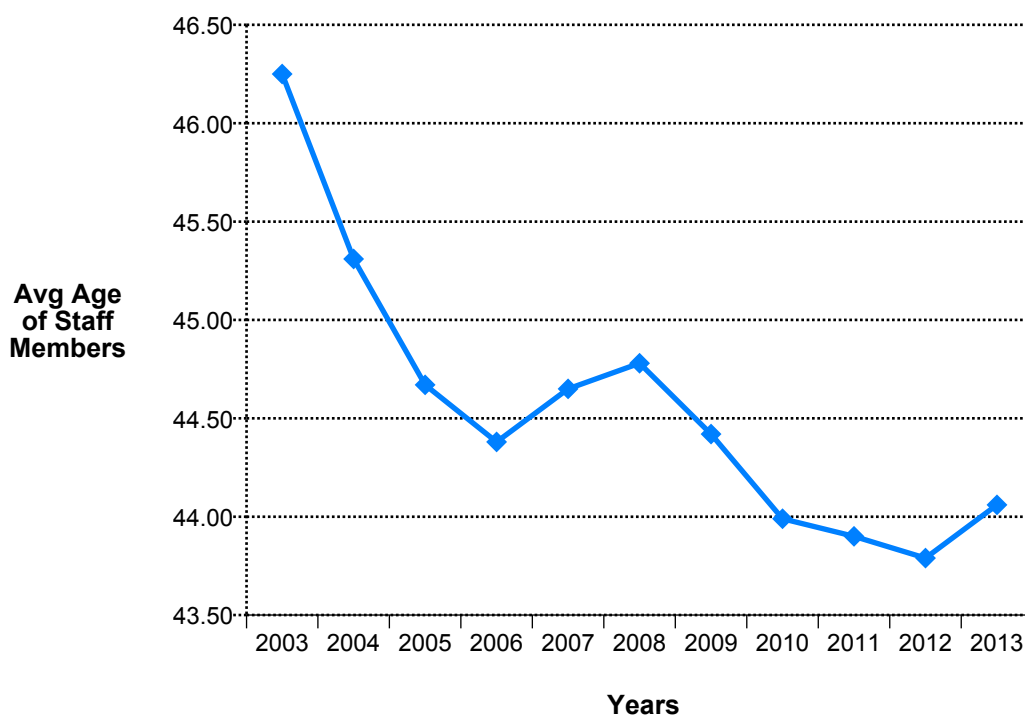


TABLE 23. Fellows and MPAs by Age Range - 31.12.2013

	Fellows		MPA (excl. Users)		Users		Grand Total	
	Count	%	Count	%	Count	%	Count	%
<= 25	58	10.25 %	71	6.13 %	926	9.18 %	1055	8.93 %
26-30	280	49.47 %	195	16.84 %	1935	19.18 %	2410	20.40 %
31-35	201	35.51 %	184	15.89 %	1344	13.32 %	1729	14.64 %
36-40	26	4.59 %	154	13.30 %	1071	10.62 %	1251	10.59 %
41-45	1	0.18 %	116	10.02 %	994	9.85 %	1111	9.41 %
46-50			112	9.67 %	967	9.59 %	1079	9.14 %
51-55			99	8.55 %	868	8.61 %	967	8.19 %
56-60			78	6.74 %	718	7.12 %	796	6.74 %
61-65			73	6.30 %	572	5.67 %	645	5.46 %
> 65			76	6.56 %	692	6.86 %	768	6.50 %
Total	566	100 %	1158	100 %	10087	100 %	11811	100 %

Figure 23: Fellows and MPAs by Age Range - 31.12.2013

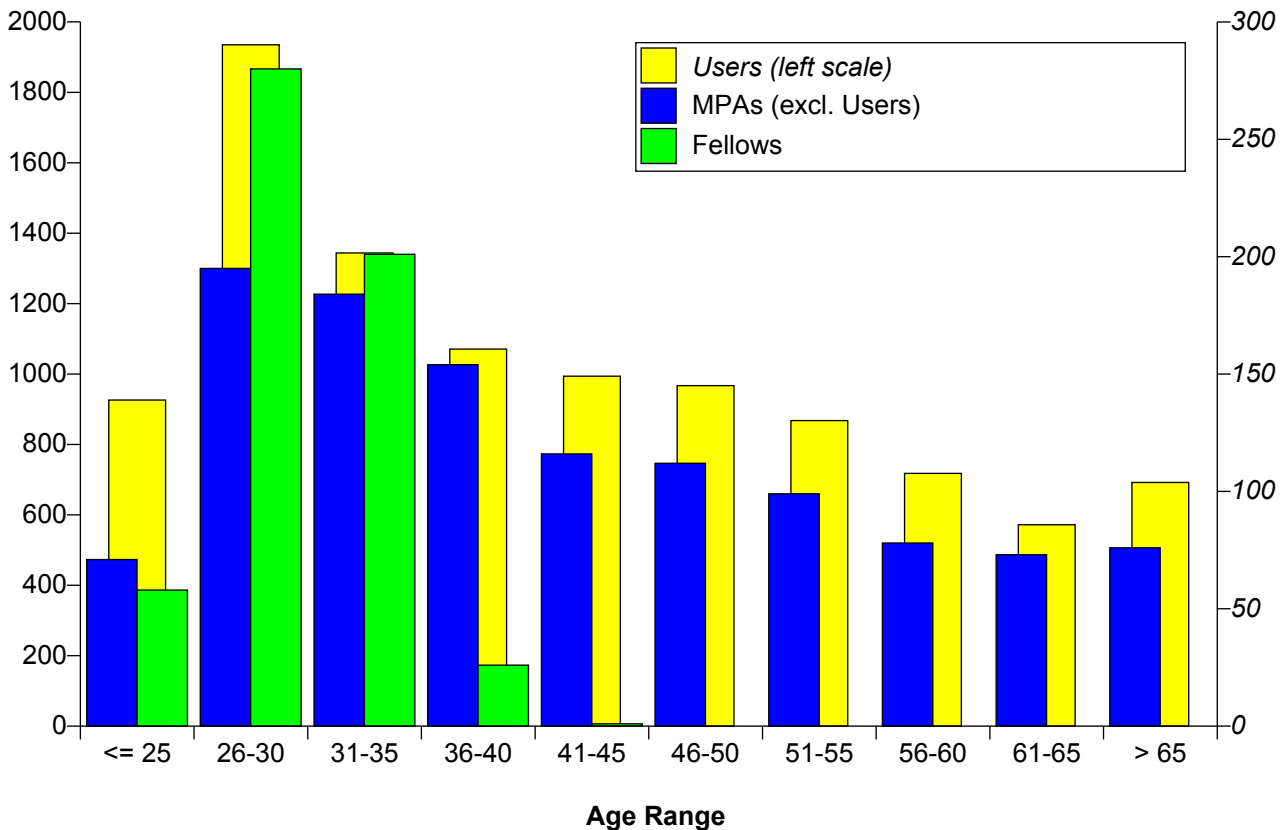


TABLE 24. Evolution of Arrivals of Staff Members by age group over the past 10 years

	<= 25	26-30	31-35	36-40	41-45	46-50	51-55	56-60	61-65	> 65	Total
2003	27	36	29	19	9	12	16	3			151
	17.88	23.84	19.21	12.58	5.96	7.95	10.60	1.99			100
2004	38	79	83	48	24	15	16	11	2	1	317
	11.99	24.92	26.18	15.14	7.57	4.73	5.05	3.47	0.63	0.32	100
2005	43	48	50	36	14	14	4				209
	20.57	22.97	23.92	17.22	6.70	6.70	1.91				100
2006	15	55	58	26	10	7	4	2			177
	8.47	31.07	32.77	14.69	5.65	3.95	2.26	1.13			100
2007	9	27	22	8	9	1	1				77
	11.69	35.06	28.57	10.39	11.69	1.30	1.30				100
2008	8	31	16	16	12	1	3	3			90
	8.89	34.44	17.78	17.78	13.33	1.11	3.33	3.33			100
2009	16	50	42	23	9	5	4	3			152
	10.53	32.89	27.63	15.13	5.92	3.29	2.63	1.97			100
2010	18	60	73	47	12	10	7	2			229
	7.86	26.20	31.88	20.52	5.24	4.37	3.06	0.87			100
2011	17	42	52	32	14	2	2				161
	10.56	26.09	32.30	19.88	8.70	1.24	1.24				100
2012	12	49	82	27	14	7	2	1	1		195
	6.15	25.13	42.05	13.85	7.18	3.59	1.03	0.51	0.51		100
2013	12	37	38	18	6	7	1				119
	10.08	31.09	31.93	15.13	5.04	5.88	0.84				100

Average age of arrivals

	1	2	3	4	5a	5b	Total
in 2013:	33.90	32.18	32.69	33.29	35.00	32.18	32.82

TABLE 25. Average Age by Professional Category, Status and Type of Contract - 31.12.2013

		Professional Category								
		1	2	3	4	5a	5b	5c		
Staff	LD	38.63	35.14	35.68	35.63	38.69	35.41	37.50	35.75	44.06
	IC	51.19	48.13	46.52	50.04	48.83	46.51	53.80	47.65	
Fellows	LD	31.46	29.59	26.21		30.11			29.67	

TABLE 26. Staff Members by Professional Category and Years of Service - 31.12.2013

Completed Years of Service in 2013	Professional Category							Total	%
	1	2	3	4	5a	5b	5c		
>= 35		19	21	1	3	12	1	57	2.27
30-34	1	42	53	7	4	17	3	127	5.05
25-29	4	91	49	4	8	9		165	6.57
20-24	11	85	49	1	14	13	1	174	6.92
15-19	8	205	90	1	23	14	1	342	13.61
10-14	8	156	136	21	21	21		363	14.44
5-9	6	133	195	46	19	84	4	487	19.38
0-4	39	302	292	36	45	82	2	798	31.75
Total	77	1033	885	117	137	252	12	2513	100

Average Years of Service of Staff Members	9.38	12.82	11.40	9.21	11.91	11.42	17.50	11.88
--	-------------	--------------	--------------	-------------	--------------	--------------	--------------	--------------

Professional Categories	1. Research Physicists	2. Scientific & Eng. work	3. Technical work	4. Manual work	5a. Prof. Admin. work	5b. Office and Admin. work	5c. Office work
--------------------------------	------------------------	---------------------------	-------------------	----------------	-----------------------	----------------------------	-----------------

Staff Recruitment

TABLE 27. Candidates Applied, Invited/Appeared for Selection Boards and Appointments Offered/Refused During 2013 by Nationality and Gender

	Application			Invited			Not Attended			Selected			Refused Offer		Success Rate
	F	M	Total	F	M	Total	F	M	Total	F	M	Total	M	Total	
AT	11	40	51	2	5	7					1	1			1.96 %
BE	53	110	163	2	3	5				1	3	4			2.45 %
BG	45	204	249	2		2									
CH	369	520	889	18	10	28	3	1	4		2	2			0.22 %
CZ	15	37	52		1	1									
DE	63	201	264	4	22	26		1	1		7	7			2.65 %
DK	6	28	34	1	2	3		1	1						
ES	197	815	1012	7	25	32				3	9	12			1.19 %
FI	22	79	101		1	1									
FR	894	1862	2756	26	143	169	3	9	12	9	37	46	2	2	1.67 %
GB	100	343	443	7	27	34	1	2	3	2	3	5	1	1	1.13 %
GR	135	460	595	2	13	15		1	1		3	3			0.50 %
HU	31	137	168	1	5	6		1	1	1		1			0.60 %
IL	5	11	16												
IT	308	1079	1387	14	47	61		5	5	5	13	18			1.30 %
NL	17	51	68	1	3	4				1		1			1.47 %
NO	5	22	27												
PL	76	310	386	1	21	22				1	4	5			1.30 %
PT	109	472	581	1	17	18		1	1		4	4			0.69 %
RO	62	133	195	1	5	6		1	1		1	1			0.51 %
RS	14	51	65												
SE	15	40	55	3	5	8		1	1						
SK	11	51	62		1	1									
NMS	305	1008	1313	1	4	5				1	2	3			0.23 %
Total	2868	8064	10932	94	360	454	7	24	31	24	89	113	3	3	1.03 %

TABLE 28. Vacancies Published and Filled During 2013

Vacancies published in 2013	117
Vacancies published and filled in 2013	77
Vacancies published in 2013 and open as at 31.12.	40
Vacancies republished in 2013	8

Figure 27: Candidates Applied, Invited and Selected in 2013 by Gender

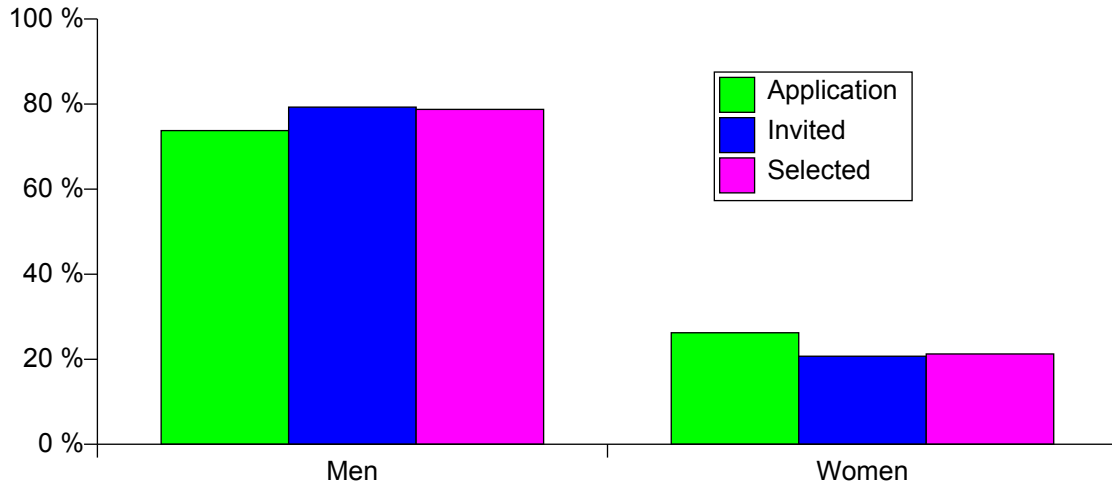


TABLE 29. Candidates Applied and Selected by Professional Category in 2013

	Application		Selected	
	F	M	F	M
1	14.73 %	85.27 %	17.65 %	82.35 %
2	10.66 %	89.34 %	16.67 %	83.33 %
3	10.89 %	89.11 %	5.88 %	94.12 %
4	2.05 %	97.95 %	14.29 %	85.71 %
5a	55.79 %	44.21 %	44.44 %	55.56 %
5b	75.83 %	24.17 %	80.00 %	20.00 %

Figure 29: Female Candidates Applied and Selected by Professional Category

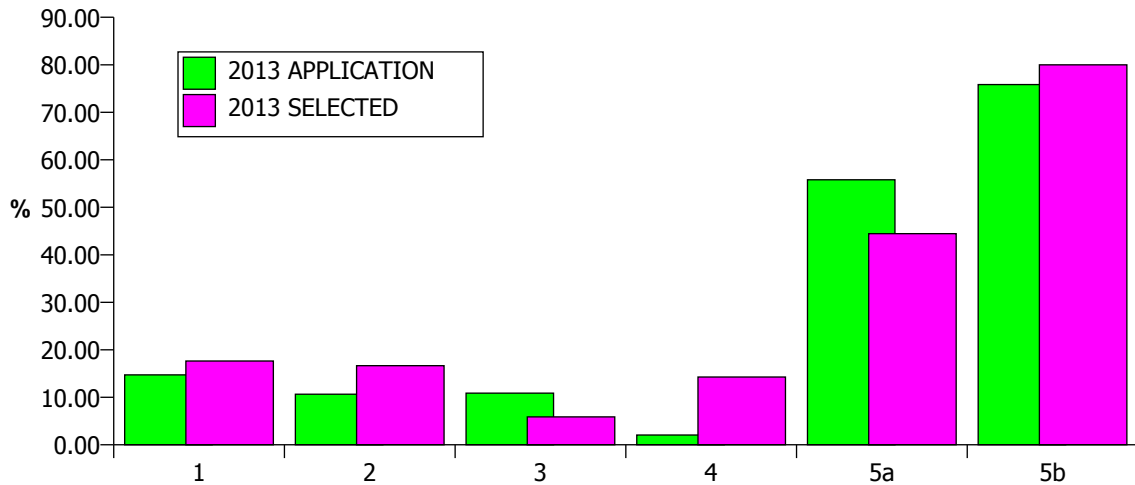


TABLE 30. Number of Staff candidates selected by nationality over the past 5 years

	2009	2010	2011	2012	2013	Total
AT	2	2	4	6	1	15
BE	4	1	4	3	4	16
BG	1	3	2	1		7
CH	18	14	11	10	2	55
CZ				2		2
DE	8	13	9	10	7	47
DK	2	1	3	1		7
ES	7	6	14	18	12	57
FI	3	6	3	1		13
FR	83	86	80	75	46	370
GB	12	20	14	20	5	71
GR	1	2	6	4	3	16
HU	2	1	1	3	1	8
IL			1			1
IT	23	32	25	25	18	123
NL	1	4	1	3	1	10
NO	3	1	1			5
PL	13	10	6	8	5	42
PT	2	6	4	11	4	27
RO			5	2	1	8
SE	2	2	1	3		8
SK		1	2	2		5
NMS	2	1	4	3	3	13
Total	189	212	201	211	113	926

Figure 30: Number of Staff candidates selected over the past 5 years

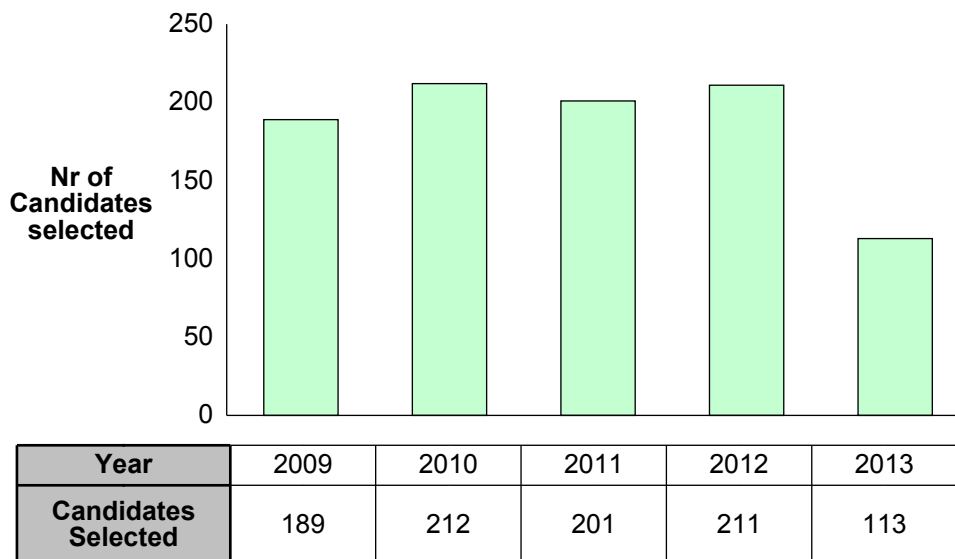
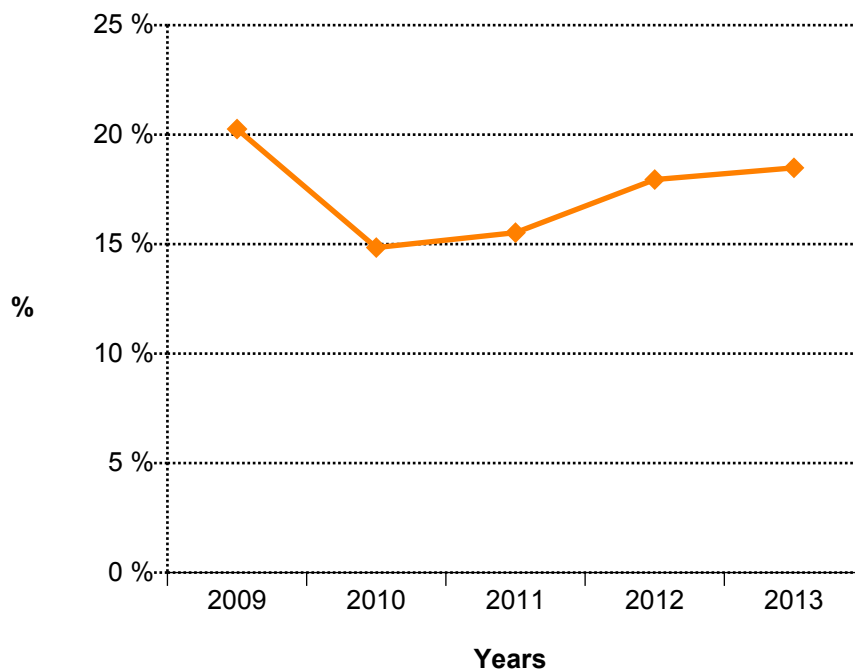


TABLE 31. Staff Members Recruited (Arrivals) in 2013 by Professional Category

From	Professional Category						Total
	1	2	3	4	5a	5b	
Fellows	4	14	2		2		22
Associated Members of Personnel	6	13	1		1		21
No previous status		17	32	7	9	11	76
Total	10	44	35	7	12	11	119

Professional Categories	1. Research Physicists	2. Scientific & Eng. work	3. Technical work	4. Manual work	5a. Prof. Admin. work	5b. Office and Admin. work	5c. Office work
-------------------------	------------------------	---------------------------	-------------------	----------------	-----------------------	----------------------------	-----------------

Figure 31. Percentage of staff recruited over the past 5 years from Fellows



Fellows Recruitment

TABLE 32A. Candidates Applied and Selected during 2013 by Nationality (or Institute Nationality Where Appropriate) and Gender

	Application			Selected			Success rate
	F	M	Total	F	M	Total	
AT	1	16	17	1	6	7	41.2
BE	1	22	23	1	3	4	17.4
BG	15	60	75		1	1	1.3
CH	9	25	34	2	4	6	17.6
CZ	4	19	23	1	2	3	13.0
DE	14	87	101		24	24	23.8
DK		8	8		1	1	12.5
ES	59	261	320	4	31	35	10.9
FI	1	15	16	1	6	7	43.8
FR	25	124	149	6	17	23	15.4
GB	14	67	81	2	12	14	17.3
GR	44	174	218	3	12	15	6.9
HU		24	24		5	5	20.8
IL	1	5	6				
IT	40	195	235	9	46	55	23.4
NL		5	5				
NO	2	6	8		1	1	12.5
PL	21	98	119	3	19	22	18.5
PT	10	88	98	1	7	8	8.2
RO	17	15	32	1		1	3.1
RS	5	17	22	1	2	3	13.6
SE	1	6	7	2	1	3	42.9
SK	6	19	25		4	4	16.0
NMS	72	353	425	3	28	31	7.3
Total	362	1709	2071	41	232	273	13.2

TABLE 32B. Candidates Applied and Selected by Gender and Nationality - 2013

	Application			Selected			Success rate
	F	M	Total	F	M	Total	
AT	1	16	17	1	6	7	41.2
BE	1	21	22	1	3	4	18.2
BG	15	61	76		2	2	2.6
CH	7	20	27	1	2	3	11.1
CZ	4	16	20	1	1	2	10.0
DE	14	86	100		24	24	24.0
DK		7	7		1	1	14.3
ES	61	259	320	4	31	35	10.9
FI	1	15	16	1	6	7	43.8
FR	24	121	145	6	15	21	14.5
GB	13	64	77	2	12	14	18.2
GR	44	175	219	4	12	16	7.3
HU		23	23		5	5	21.7
IL	1	5	6				
IT	41	201	242	9	47	56	23.1
NL		5	5				
NO	2	6	8		1	1	12.5
PL	22	99	121	3	19	22	18.2
PT	10	88	98	1	7	8	8.2
RO	17	15	32	1		1	3.1
RS	5	17	22	1	2	3	13.6
SE	1	4	5	2	1	3	60.0
SK	6	21	27		4	4	14.8
NMS	72	364	436	3	31	34	7.8
Total	362	1709	2071	41	232	273	13.2

TABLE 33. Number of Fellows selected by Nationality over the past 5 years

	2009	2010	2011	2012	2013	Total
AT	8	6	5	6	7	32
BE	1	3	2	5	4	15
BG	3	1	3	3	2	12
CH	6	3	4	5	3	21
CZ	4	1	2	6	2	15
DE	23	17	26	30	24	120
DK			1	1	1	3
ES	21	31	32	40	35	159
FI	1	2		5	7	15
FR	20	24	21	28	21	114
GB	14	16	10	17	14	71
GR	4	6	16	13	16	55
HU	4	3	3	7	5	22
IL			1			1
IT	34	36	42	36	56	204
NL	2	1	4	4		11
NO	2	1	2	2	1	8
PL	16	15	11	14	22	78
PT	9	8	7	13	8	45
RO			5	5	1	11
RS					3	3
SE	3		3	2	3	11
SK				1	4	5
NMS	34	30	32	32	34	162
Total	209	204	232	275	273	1193

Student Recruitment

TABLE 34. Candidates Applied and Selected for the Technical and Doctoral Student Programme during 2013 by Nationality (or Institute Nationality Where Appropriate) and Gender

	Application			Selected			Success rate
	F	M	Total	F	M	Total	
AT	4	15	19	1	5	6	31.6
BE	1	14	15		3	3	20.0
BG	1	31	32		3	3	9.4
CH	13	41	54	1	5	6	11.1
CZ	1	13	14		2	2	14.3
DE	22	102	124	3	22	25	20.2
DK	1	14	15		3	3	20.0
ES	52	220	272	3	10	13	4.8
FI	3	24	27		1	1	3.7
FR	21	143	164	1	7	8	4.9
GB	35	221	256	4	17	21	8.2
GR	47	193	240	9	27	36	15.0
HU	2	17	19		5	5	26.3
IL		2	2				
IT	72	529	601	9	19	28	4.7
NL	4	12	16	2		2	12.5
NO	5	38	43	3	8	11	25.6
PL	21	84	105	6	22	28	26.7
PT	3	35	38		3	3	7.9
RO	4	14	18				
SE		11	11		4	4	36.4
SK		10	10		3	3	30.0
RS	6	9	15	1		1	6.7
NMS	24	132	156	1	2	3	1.9
Total	342	1924	2266	44	171	215	9.5

TABLE 35. Number of Students selected (TECH, DOCT) by Nationality over the past 5 years

	2009	2010	2011	2012	2013	Total
AT	15	10	8	12	7	52
BE	5	1	2	1	3	12
BG	2	3	3	5	3	16
CH	3	3	2	3	3	14
CZ	2	1	3	4	1	11
DE	36	38	49	37	23	183
DK		1	1	1	2	5
ES	23	28	23	17	14	105
FI	8	5	2	6	1	22
FR	13	13	15	10	7	58
GB	3	19	13	18	16	69
GR	16	13	25	29	37	120
HU	3	3	4	5	6	21
IT	18	23	31	37	33	142
NL	2	1	7	2	2	14
NO	12	13	10	11	11	57
PL	16	22	30	42	28	138
PT	3	2	2	3	3	13
RO			8	7	2	17
RS					1	1
SE	5	1	2	6	2	16
SK	1	4	1	1	4	11
NMS	4	11	3	3	6	27
Total	190	215	244	260	215	1124

TABLE 36. Candidates Applied and Selected for the Summer Student Programme during 2013 by Nationality (or Institute Nationality Where Appropriate) and Gender

	Application			Selected			Success rate
	F	M	Total	F	M	Total	
AT	7	22	29	1	2	3	10.3
BE	7	11	18	1	2	3	16.7
BG	5	16	21		2	2	9.5
CH	4	17	21	2	3	5	23.8
CZ	13	35	48	1	4	5	10.4
DE	34	103	137	5	15	20	14.6
DK	4	17	21		6	6	28.6
ES	140	472	612	5	8	13	2.1
FI	9	19	28	2	2	4	14.3
FR	23	88	111	6	9	15	13.5
GB	86	312	398	3	15	18	4.5
GR	35	93	128	4	6	10	7.8
HU	7	23	30		4	4	13.3
IL	2	13	15		2	2	13.3
IT	53	109	162	5	9	14	8.6
NL	9	21	30	3	3	6	20.0
NO	5	25	30	2	2	4	13.3
PL	20	83	103	1	5	6	5.8
PT	6	39	45	1	3	4	8.9
RO	12	24	36	2	4	6	16.7
SE	5	37	42	2	6	8	19.0
SK	4	20	24	1	2	3	12.5
RS	10	10	20	1	1	2	10.0
NMS	145	584	729	6	21	27	3.7
Total	645	2193	2838	54	136	190	6.7

for 143 Member State places

TABLE 37. Candidates Applied and Selected for the Administrative Student Programme during 2013 by Nationality (or Institute Nationality Where Appropriate) and Gender

	Application			Selected			Success rate
	F	M	Total	F	M	Total	
BE	2	4	6				
BG	3	4	7				
CH	32	11	43	3	1	4	9.3
CZ	4	2	6	1		1	16.7
DE	6	4	10		1	1	10.0
ES	35	19	54	1		1	1.9
FI	1	6	7		1	1	14.3
FR	40	28	68	3	2	5	7.4
GB	13	11	24				
GR	40	13	53	2	2	4	7.5
HU	18	8	26	4		4	15.4
IT	11	16	27		1	1	3.7
NL	1		1				
PL	7	5	12	1		1	8.3
PT	3	6	9				
RO	12		12	2		2	16.7
SE	1		1				
RS	7	2	9				
NMS	9	7	16				
Total	245	146	391	17	8	25	6.4

TABLE 38. Staff Member Arrivals and Departures in 2013 by Residential Category and Nationality

Arrivals						Departures				
Nat	Non-Resident	Resident	Total	%	% of staff as at 31.12.	Non-Resident	Resident	Total	%	% of staff as at 31.12.
AT	2	1	3	2.52	6.12	1		1	0.77	2.04
BE	4		4	3.36	3.74	1	1	2	1.54	1.87
BG										
CH	1	1	2	1.68	1.16	4	15	19	14.62	11.05
CZ	1		1	0.84	20.00					
DE	7	1	8	6.72	4.40	6	1	7	5.38	3.85
DK						1		1	0.77	5.00
ES	15	1	16	13.45	12.70	6		6	4.62	4.76
FI						1		1	0.77	3.70
FR	16	25	41	34.45	3.99	19	33	52	40.00	5.06
GB	6		6	5.04	2.83	16	2	18	13.85	8.49
GR	4		4	3.36	17.39	1		1	0.77	4.35
HU										
IL										
IT	15	3	18	15.13	6.34	9	1	10	7.69	3.52
NL	2		2	1.68	2.90					
NO										
PL	6		6	5.04	9.84	5		5	3.85	8.20
PT	5		5	4.20	10.20	1		1	0.77	2.04
RO										
RS										
SE						3		3	2.31	9.68
SK	1		1	0.84	6.25	1		1	0.77	6.25
NMS	2		2	1.68	22.22	2		2	1.54	22.22
	87	32	119	100	4.74	77	53	130	100	5.17

Labour turnover = 5.17 % of average strength

This table shows all departures from 1 January 2013 to 31 December 2013

TABLE 39. Staff Member Arrivals and Departures in 2013 by Professional Category

	Arrivals	Departures
1	10	10
2	44	38
3	35	45
4	7	10
5a	12	8
5b	11	17
5c		2
Total	119	130

Figure 39: Staff Member Arrivals and Departures in 2013 by Professional Category

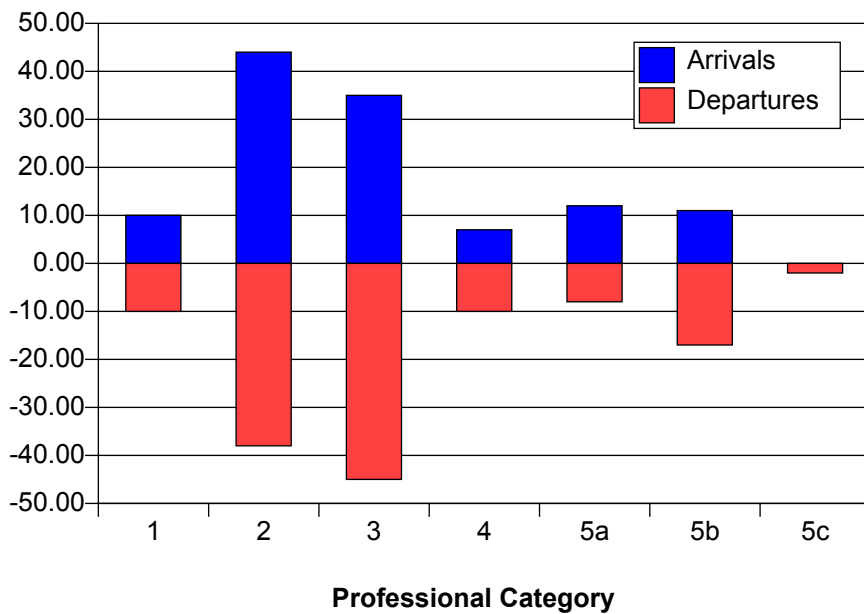


TABLE 40. Staff Member Departures in 2013 by Professional Category, Type of Contract and Reason for Leaving

Reason	Professional Category														T otal		Grand
	1		2		3		4		5a		5b		5c		LD	IC	Total
	IC	LD	IC	LD	IC	LD	IC	LD	IC	LD	IC	LD	IC	LD			
Family/Social										1					1		1
Job connected		4	1	5	1	3			1	1					13	3	16
Retirement	2		13		20		4		2	1	10		1		1	52	53
Contract expirations		4		16		18		6		2		7		1	54		54
Mutual agreement					1	1									1	1	2
Invalidity			2		1											3	3
Death			1													1	1
Total	2	8	17	21	23	22	4	6	3	5	10	7	1	1	70	60	130

This table shows all departures from 1 January 2013 to 31 December 2013

Professional Categories	1. Research Physicists	2. Scientific & Eng. work	3. Technical work	4. Manual work	5a. Prof. Admin. work	5b. Office and Admin. work	5c. Office work
-------------------------	------------------------	---------------------------	-------------------	----------------	-----------------------	----------------------------	-----------------